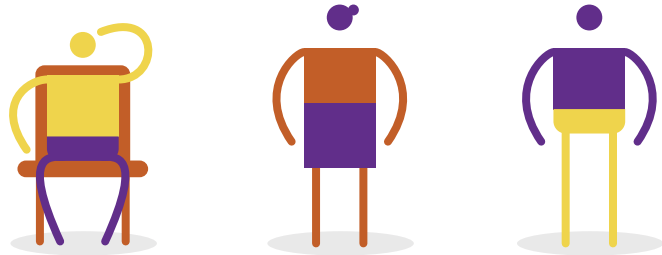


Improving later life in Greater Manchester

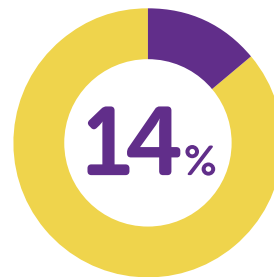
About Greater Manchester



Employment rates for people living in the North West of England are significantly worse than the English average and in Greater Manchester almost **1 in 3** people aged 50-64 years old are not in work*

*Source: Annual Population Survey, Oct 2014 - Sep 2015

By **2036**, it has been projected that:



14% of Greater Manchester's population will be **75 and over**, compared to 8% in 2011*

*Source: Modelled from the 2001 ONS census population projection



1 in 3 men aged 75 years and over will be living alone*

*Source: 'Social isolation among older people in urban areas', Buffel, Rémillard-Boillard and Phillipson

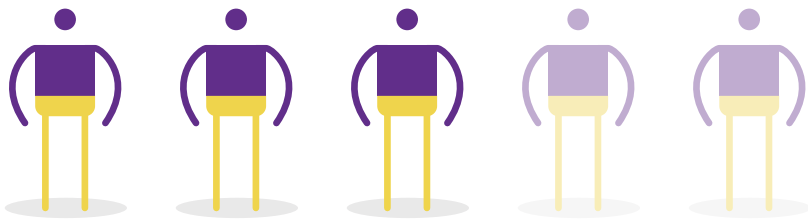
Opportunity of Ageing Better partnership



The City of Manchester is already internationally recognised for its work as an age-friendly city

The Greater Manchester area is now expanding on this commitment, which will benefit an additional **2.2 million people***

*Source: 2011 UK Census



Employment



Gross Value Added

£901.6 billion

It is estimated that boosting the number of people aged 50 years and over in work in Greater Manchester could boost the economy by as much as **£901.6 million***

*Source: Calculations by New Economy using data from Annual Population Survey and ONS Regional GVA

£6 billion



Greater Manchester has devolved powers, including control of a **£6 billion** per annum health and social care budget and control of the Work Programme*

*Source: 'Taking charge of our Health and Social Care', Greater Manchester Combined Authority, Dec 2015

The Centre for Ageing Better received £50 million from the Big Lottery Fund in January 2015 in the form of an endowment to enable it to identify what works in the ageing sector by bridging the gap between research, evidence and practice.

Awarding funds from
 **The National Lottery®**

